

Santa Barbara County Judicial Council of California Liaison Report

January 14, 2019

Judge Paul Bacigalupo

- Native Americans settled 13,000 years ago
- The Chumash tribe is deeply connected with the history of the region
- Today – Approximately 500,000 people live in Santa Barbara County



Three Courthouses

3

- **Santa Maria**
 - Located in the north
 - County's largest city with about 110,000 inhabitants
- **Santa Barbara**
 - 75 miles south of Santa Maria
 - Second largest city with about 100,000 inhabitants
- **Lompoc**
- **Adjacent Counties**
 - Ventura County
 - San Luis Obispo County
 - Kern County



Major Industries

4

In the North

- Agriculture is the top economic force in the north
 - Strawberries and wine grapes
 - Oil development
 - Military interests around Vandenberg Air Force Base

In the South

- Tourism, high-tech pursuits, and the University of California at Santa Barbara where 10,000 are employed

Court Leadership

5



- Presiding Judge Patricia Kelly, Court Executive Officer Darrel Parker, Criminal Operations Manager Angela Braun

Recent Historic Events in Santa Barbara County

6

- In 1942, a Japanese submarine surfaced off-shore and lobbed shells on coastal targets, triggering the West Coast invasion scare and influenced the decision to intern Japanese-Americans.



Recent Historic Events in Santa Barbara County

7

- In 1969, the largest oil spill in the United States waters by that time occurred, spewing an estimated 3-million gallons of crude oil into the ocean. Shortly thereafter, the California Environmental Quality Act (CEQA) became law.



Recent Historic Events in Santa Barbara County

8

- In December 2017, the Thomas Fire was the largest fire in state history, scorching 282,000 acres and destroyed 2800 homes and structures in Santa Barbara and Ventura counties. 15 people died and only a few weeks later, subsequent mudslides in Montecito killed 21 people.



- How did the Santa Barbara Court with 21 Judges and 1 Family Law Commissioner bounce back from the Thomas Fire and mudslides?

- *Resilience*

- Management provided flexible work hours with limited time-off for staff
- Bench officers were flexible with work assignments
- Safety and health were the highest priority



Facilities- Maintaining Critical Data and Emergency Power

10

- Santa Barbara is a mandatory e-filing court so reliable recovery and back-up power was in place
- However, the server room wasn't secure
- The JCC IT Division is offering help to develop a plan to move servers to a secure location
- Need to retrofit building, employ emergency generators
- Courts remained open during the Thomas fire and mudslides

Successful coordination with strategic court partners

11

- The Ventura County Court and law enforcement personnel were great neighbors
 - Helped coordinate and provide resources to house and transport inmates in vans for court appearances and provided facilities so that no court functions were interrupted.
- This is a great example about how neighboring counties can share resources, both human and physical.



Anacapa Courthouse

12



Anacapa Courthouse

13

- Spanish-Colonial style design building completed in 1929
- Has a clock tower with panoramic 360 degree views
- Elaborate hand painting murals
- Ornate wrought iron chandeliers



Anacapa Courthouse

14

- Visiting with Judge Thomas Anderle
- Joined by Judge Paul Marigonda from Santa Cruz, California Judges Association District Representative



Security Concerns

15

- Anacapa Courthouse is on an open park-like site



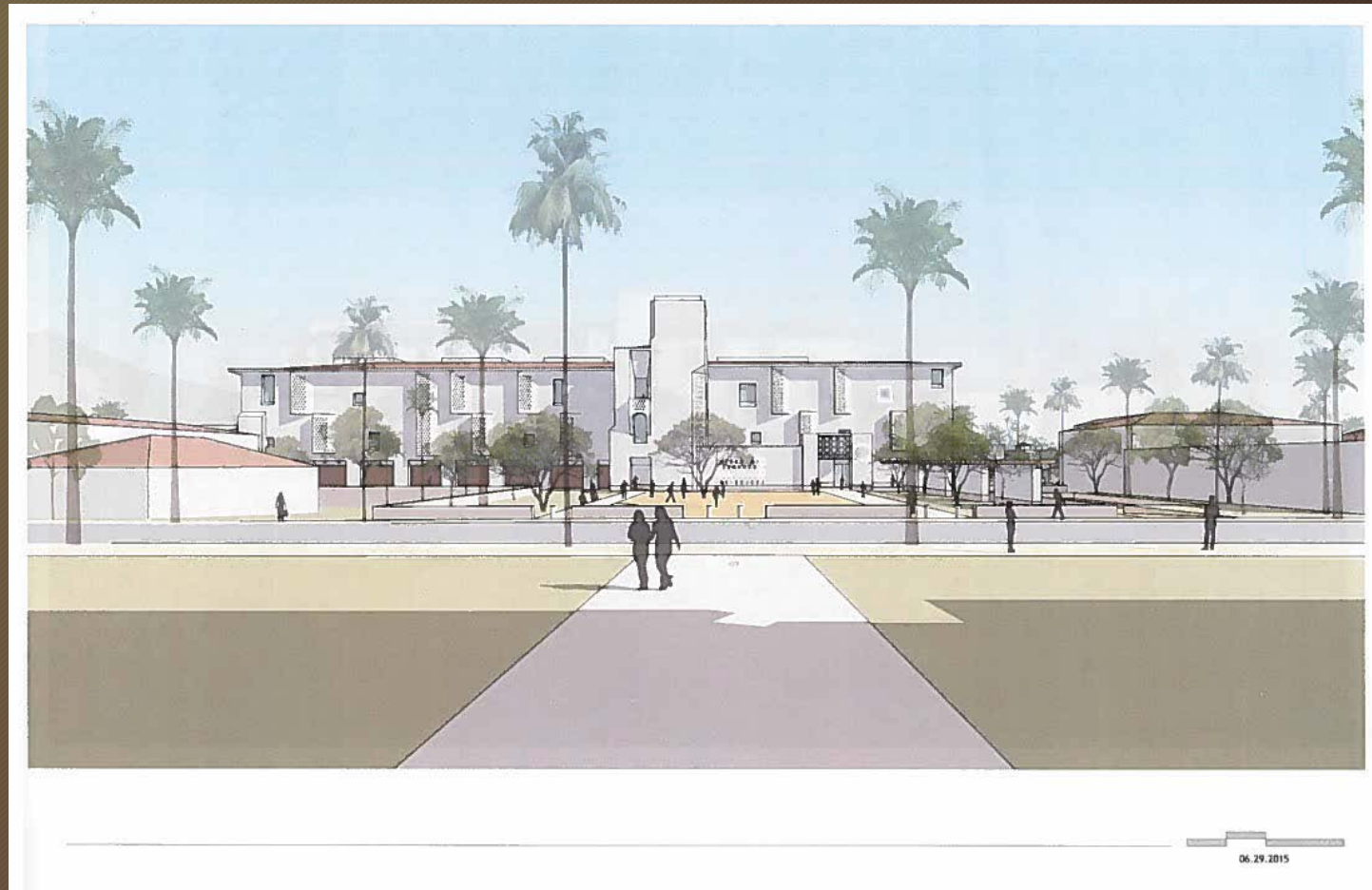
Figueroa Courthouse

16



Drawing of New Figueroa Courthouse

17



Coordination, Cooperation, Communication

18

- Presiding Judge Kelly and CEO Darrel Parker worked hard with their county partners and the local bar to design and implement plans and communicate with the public about maintaining access to justice through fires and floods
- Severe flooding in the Santa Maria courthouse in 2018 a problem that continues to impact one quarter of the courtrooms to deny

Spirit of Collaboration

19

- Court Executive Officer Darrel Parker is actively involved in a statewide coalition of court executives
 - How to maximize efficiencies of resources to address security
 - How to use resources to make purchases of scale
- Put together a local Work Group to address funding for security



- The Court appreciates that Chief Justice Tani G. Cantil-Sakauye visited their court last February and looks forward to her next visit



Senator Hannah-Beth Jackson

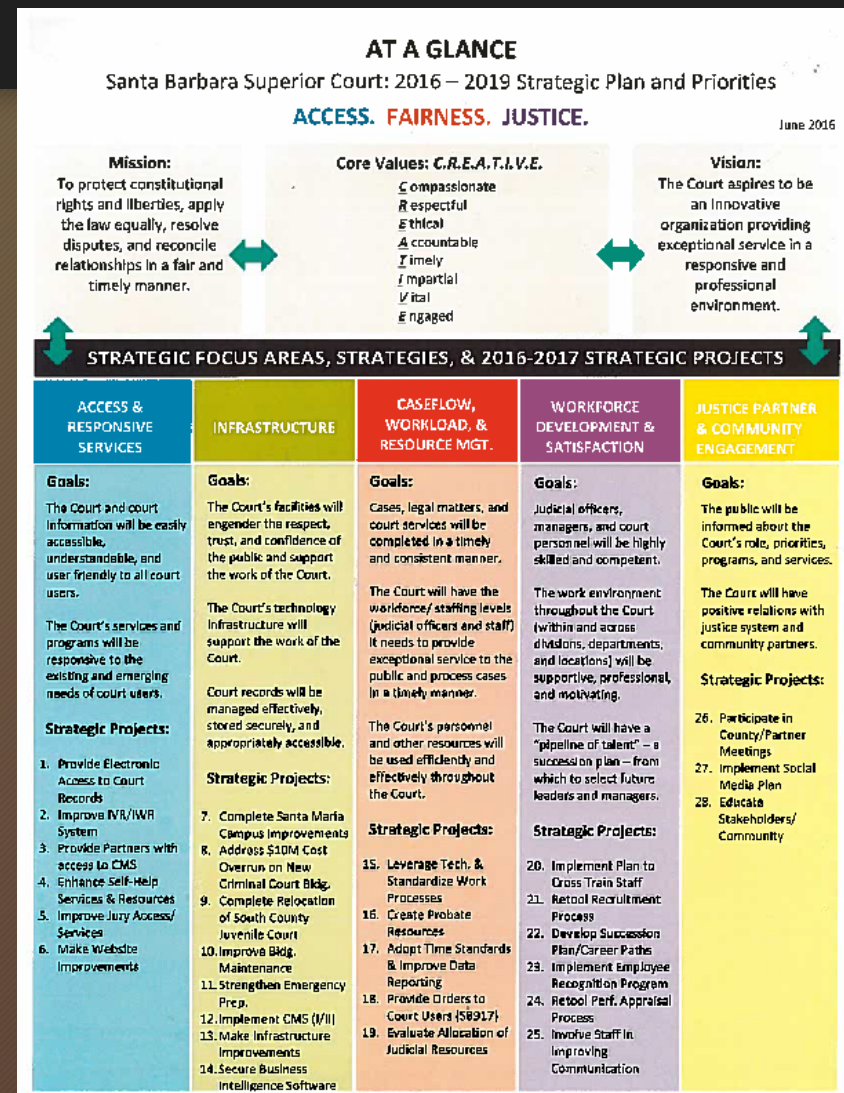
21

- The Court is grateful for the support of Judicial Council member Senator Hannah-Beth Jackson from the 19th Senate District for all she does for the Santa Barbara Court



Strategic Plan and Priorities

22



- “Technology helps bring people together.”
- The Court management is concerned that they are losing outstanding talent to other public agencies
- They are unable to increase pay raises. This is something that impacts employee morale.

Practice Resilience

24

