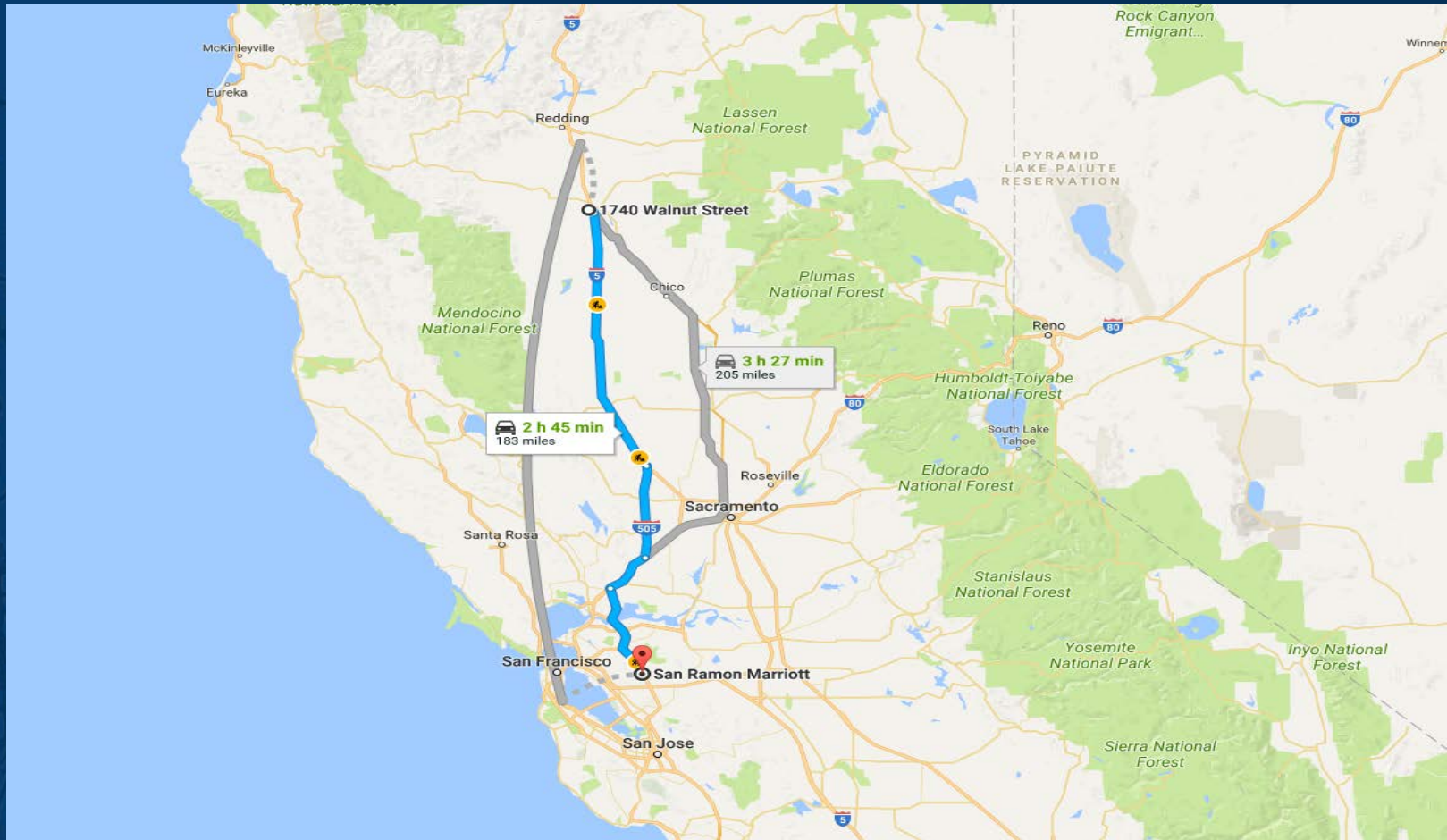




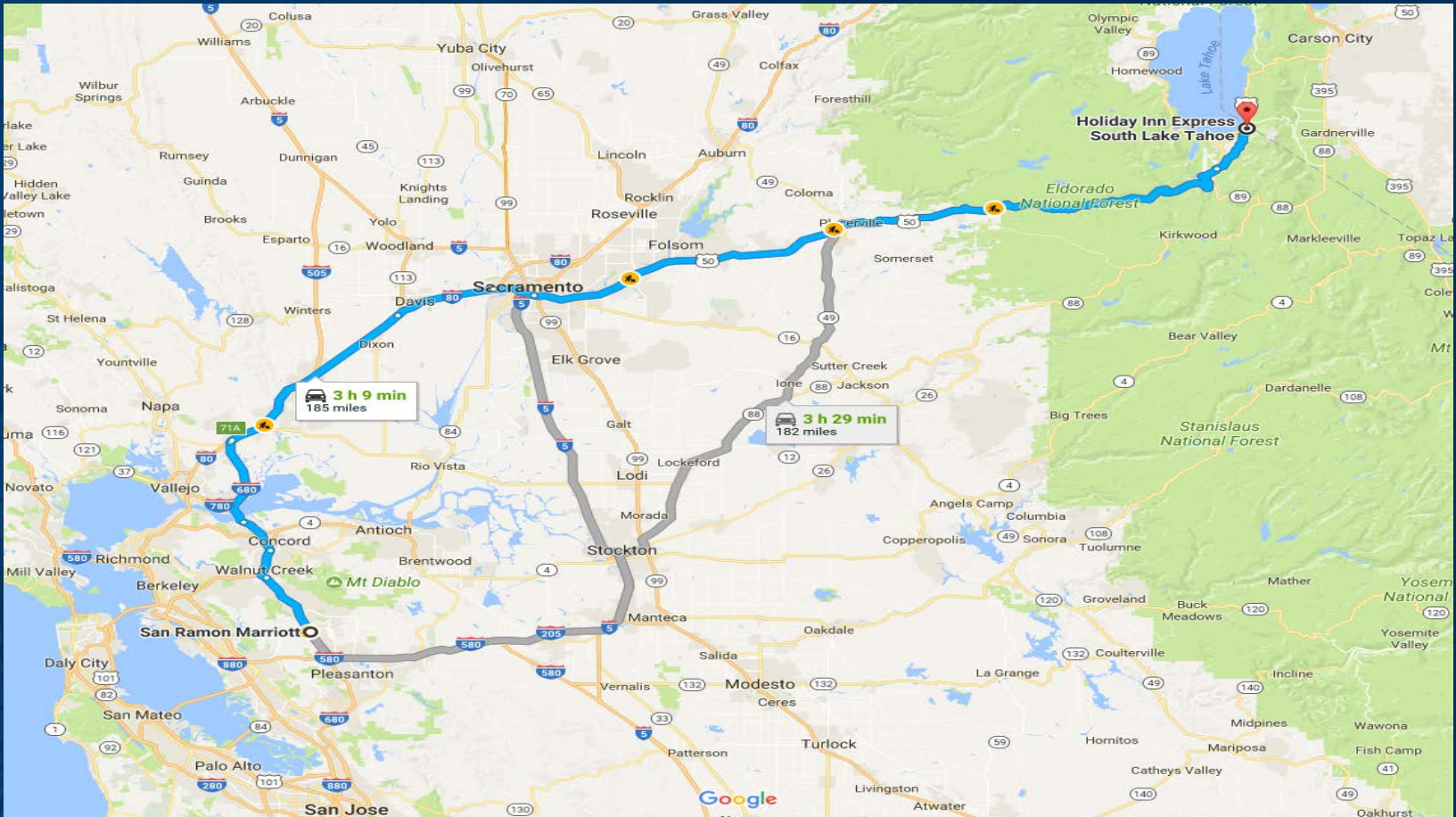
Alpine County Superior Court

Site Visit
August 3, 2017

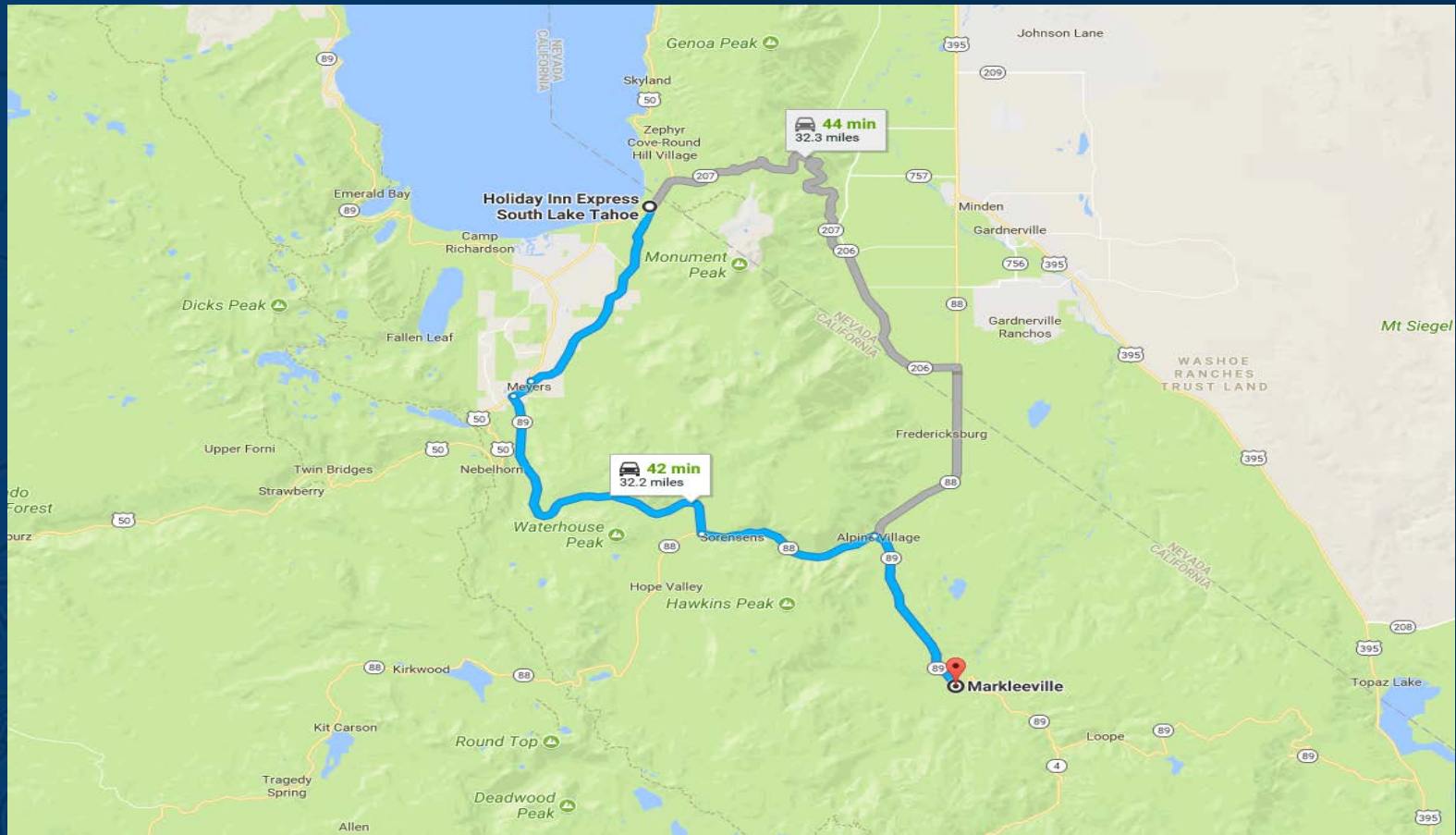
Red Bluff to San Ramon



San Ramon to SLT



SLT to Markleeville



Alpine County

- Est. March 16, 1864 (original pop was 11k)
- Smallest by population (1071 as of 2016)
- Markleeville population is 202 as of 7/17
- In the Sierra Nevada, south of Lake Tahoe
- 743 square miles, Markleeville @ 5531'

Alpine Superior Court

- Courthouse built in 1928
- 2 judges, .3 Commissioner (shared), CEO and three employees
- Presiding Judge: Hon. Thomas Kolpacoff
- Asst. Presiding Judge: Hon. Richard D. Meyer
- CEO: Annie C. Long
- 1 courtroom, 3 offices and a Clerk's Office

Alpine Superior Court

- Filings: Average about 1500 per year
- Revenues (FY 16-17): \$562,131
- Expenditures (FY 16-17): \$613,707
- Judges sit on a reciprocal basis in many counties in central and northern California

Successes

- ADA public restroom and secure Administrative Office enclosures
- Bulletproof glass added to chambers and clerk's office windows
- ADA electronic lift for outside staircase
- New sound system in the courtroom for better access to courtroom proceedings

Successes

- Tyler Odyssey Case Management System
- ESS/MSS (Employee Self Service and Manager Self Service) electronic time cards
- Empaneled a full Grand Jury
- New collection services
- Anti-slip surfaces on outside stairs

Challenges

- No onsite IT employee/assistance
- No Fiscal Manager/Clerk
- No county jail – inmates housed in El Dorado County and transported
- Security Issues re access to courtroom, clerks and other areas
- Staff recruitment and retention
- Remote location and severe weather















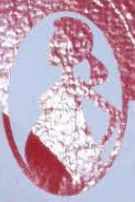
**WHEN YOU DRINK
YOUR BABY
DRINKS WITH YOU.**

**ALCOHOL DURING
PREGNANCY
MAY CAUSE
BIRTH DEFECTS.**

BE

**CAUSE
DEFECTS.**

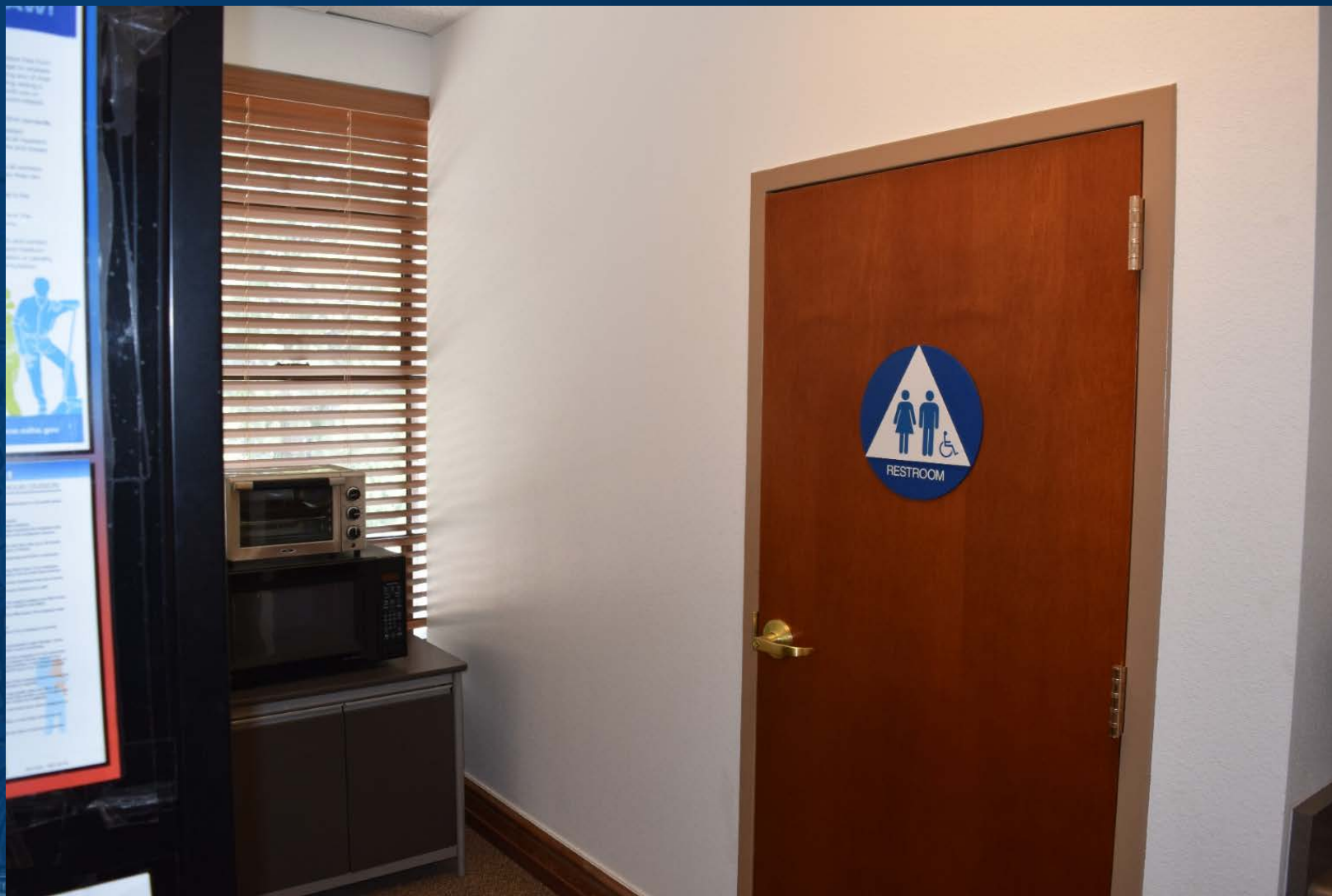
h Dept. / Injury Control



CII
URE



MA

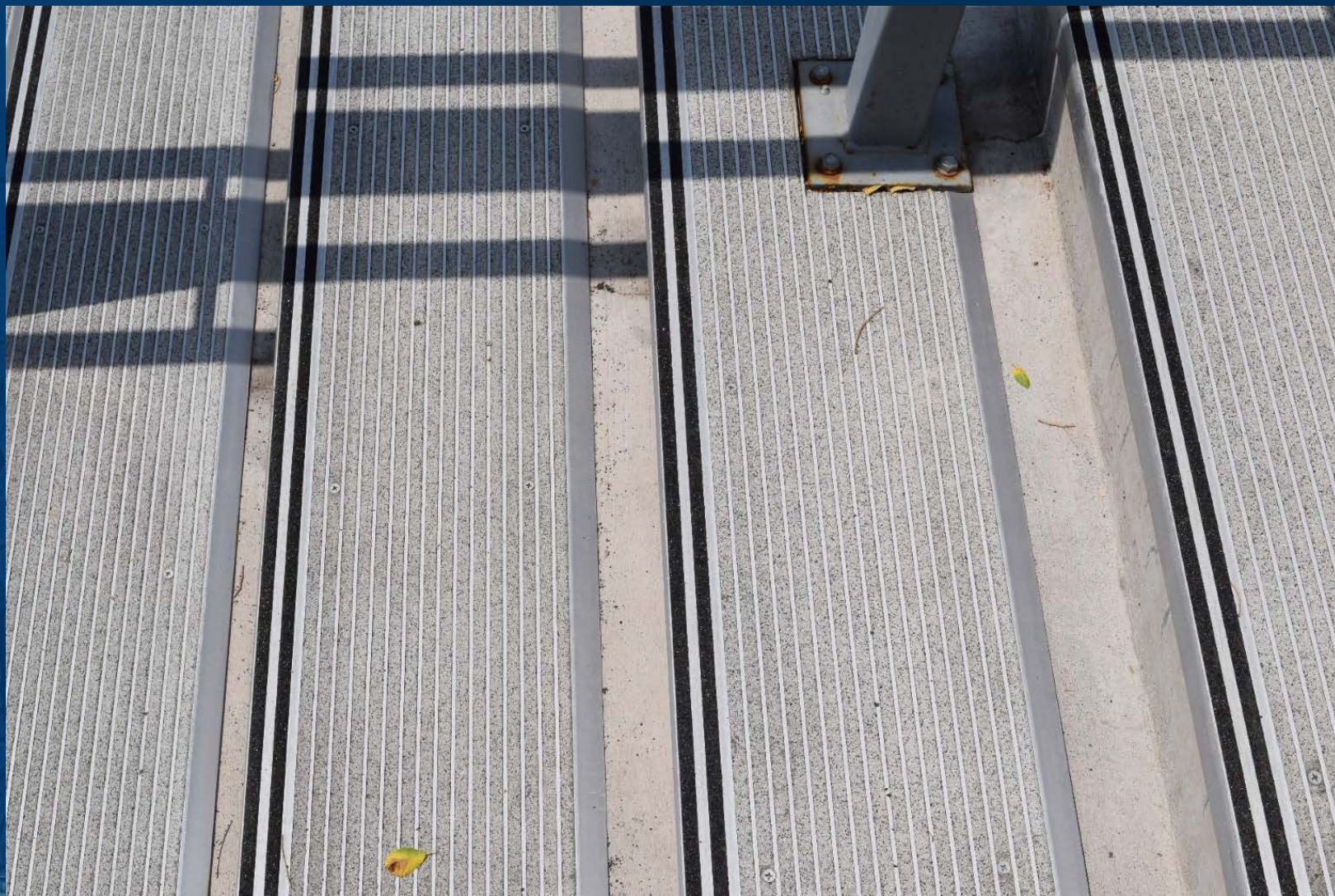


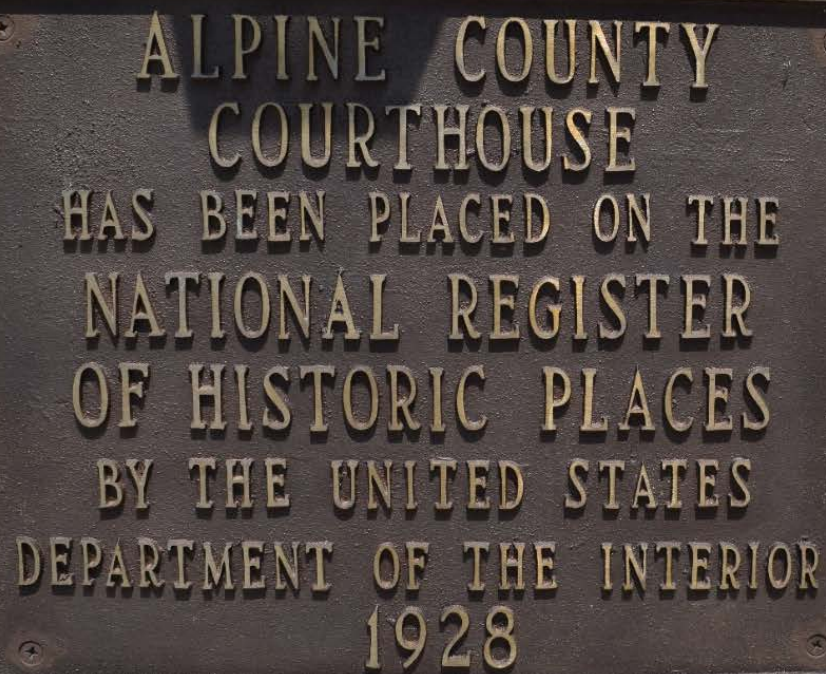










A rectangular bronze plaque with a raised border is mounted on a light-colored, rough-hewn stone wall. The plaque is secured by four small screws at its corners. The text on the plaque is raised and reads: "ALPINE COUNTY COURTHOUSE HAS BEEN PLACED ON THE NATIONAL REGISTER OF HISTORIC PLACES BY THE UNITED STATES DEPARTMENT OF THE INTERIOR 1928".

ALPINE COUNTY
COURTHOUSE
HAS BEEN PLACED ON THE
NATIONAL REGISTER
OF HISTORIC PLACES
BY THE UNITED STATES
DEPARTMENT OF THE INTERIOR
1928











THANKS TO ACSC

