



Sierra County Superior Court

Site Visit
August 4, 2017

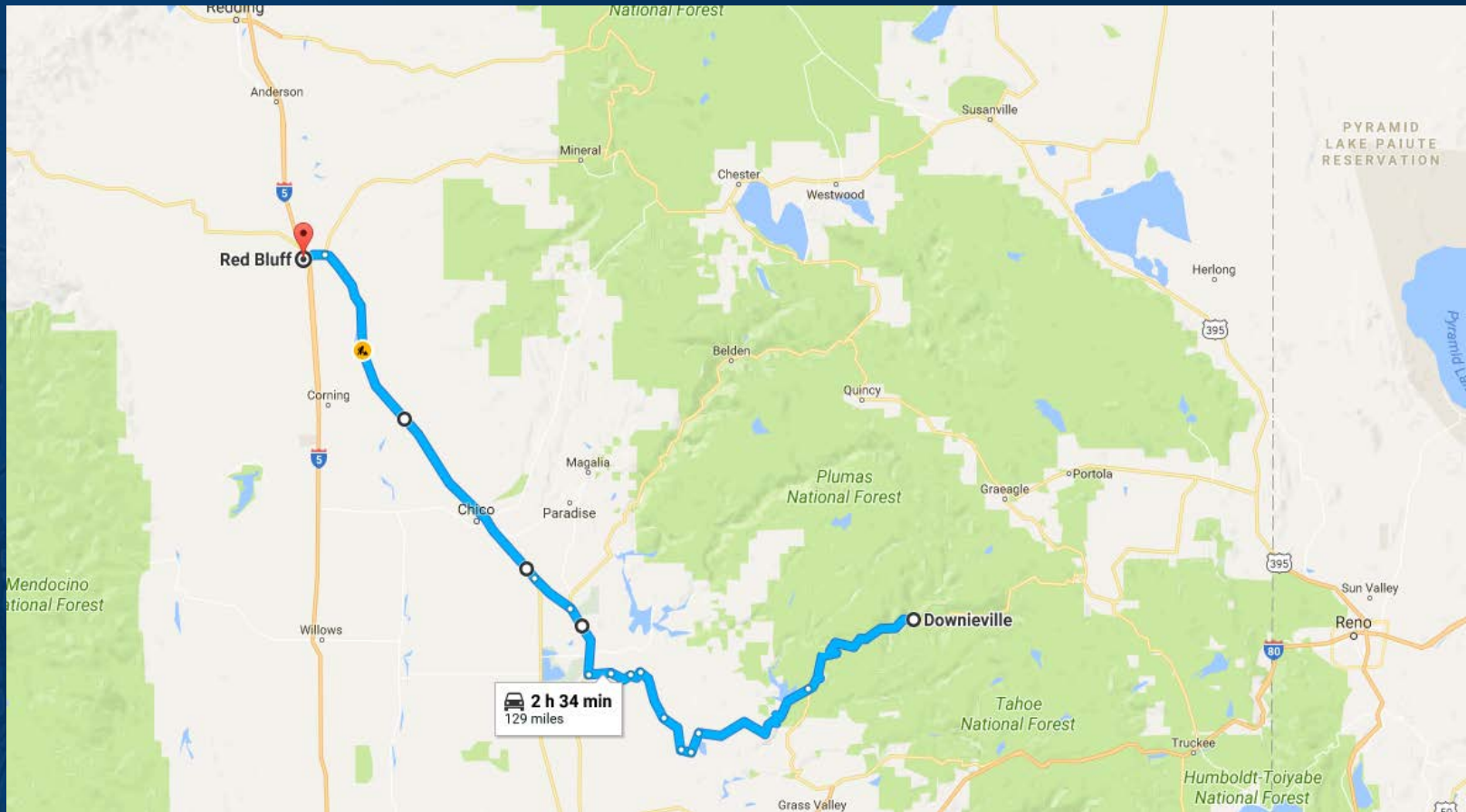


Sierra County



https://en.wikipedia.org/wiki/Sierra_County,_California#/media/File:Map_of_California_highlighting_Sierra_County.svg

Downieville to Red Bluff



Sierra County

- Established 1852
- 2nd smallest by population (3240 as of 2010)
- Downieville population is 282 (2010)
- In the Sierra Nevada, NW of Lake Tahoe
- 962 square miles, Downieville @ 2966'

Sierra Superior Court

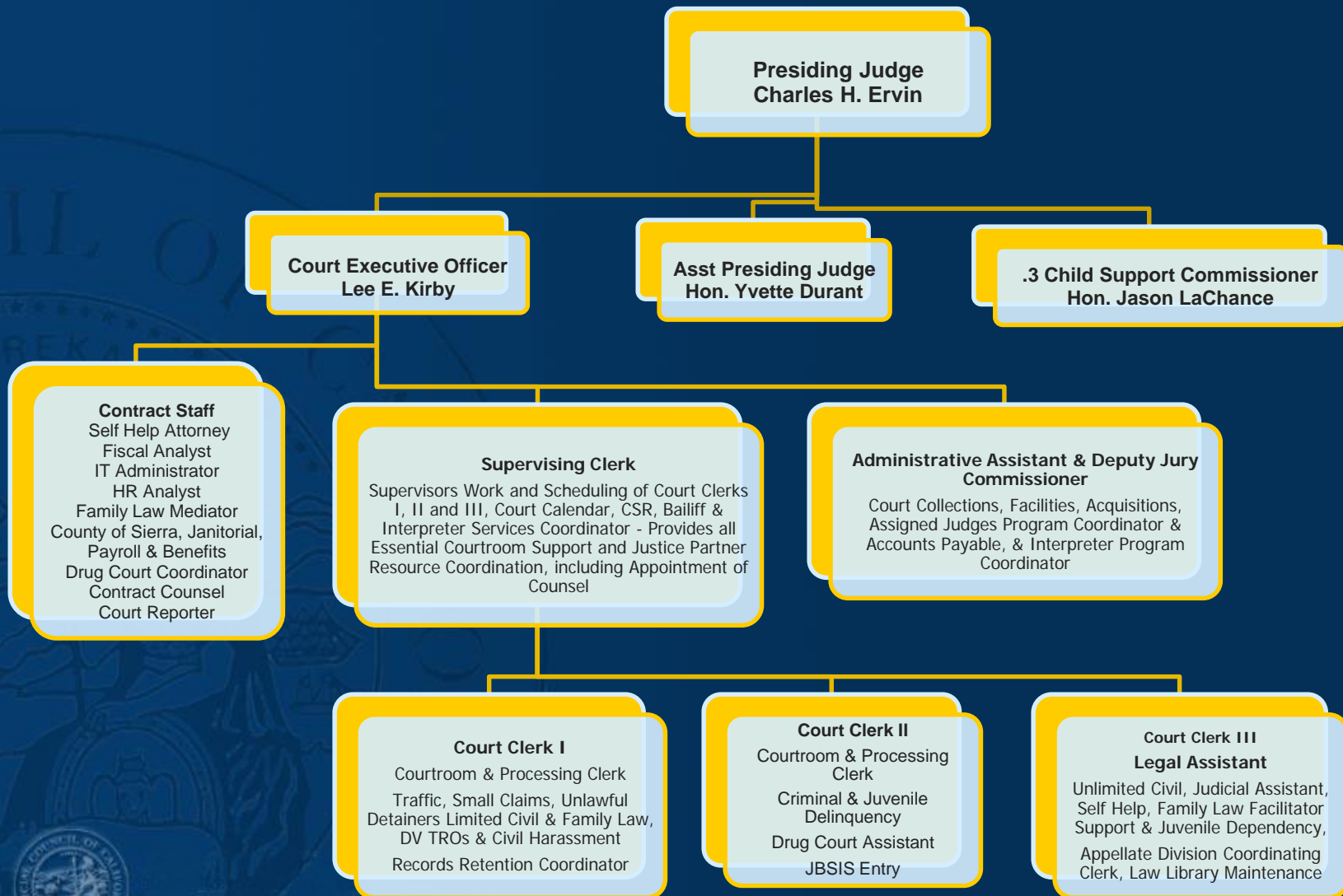
- Courthouse built in 1952
- 2 judges, .3 Commissioner (shared), CEO and five employees
- Presiding Judge: Hon. Charles H. Ervin
- Asst. Presiding Judge: Hon. Yvette Durant
- CEO: Lee Kirby
- 1 courtroom, 3 offices and a Clerk's Office

Sierra Superior Court

- Filings: Average about 850 per year
- Revenues (FY 17-18): \$835,244
- Expenditures (FY 17-18): \$1,065,740
- Judges sit on a reciprocal basis in many counties in central and northern California

Successes

- New roof, waterproof building shell and energy efficient windows
- ADA compliant bathroom
- Additional facilities projects underway for security and office space upgrades



Successes

- Collaborative courts established for mental health, drug & alcohol veteran issues
- The DA, PD, County DHHS and Probation work together with defendants who meet appropriate criteria with the objective of implementing evidence-based practices for successful offender treatment

Challenges

- Through JCC security grants, security cameras and secure entrances have been established
- Courthouse entrance, common areas and single courtroom remain unsecured
- Inmates are walked through the court staff offices to reach the courtroom holding cell

Challenges

- Recruiting experienced and qualified staff is difficult due to a lack of available housing, declining permanent residences and school populations, lack of medical care
- Severe weather and 2-3 hour round trip commutes over mountain passes discourage likely candidates from applying and staying with long-term career goals

Challenges

- Limited local resources for any repairs, equipment, deliveries and/or project management are ongoing constraints
- Court has needed to develop a successful video conferencing network to facilitate communication with the nearest jail facility, reciprocal judicial assistance, regional appellate panel and professional service contractors









25

JUSTICE
COURT



Use Your Ashtray!

















SIERRA COUNTY GOLD













THANKS TO SCSC

