

# Superior Court of Siskiyou County

Commissioner David E. Gunn,

December 16, 2016

1926

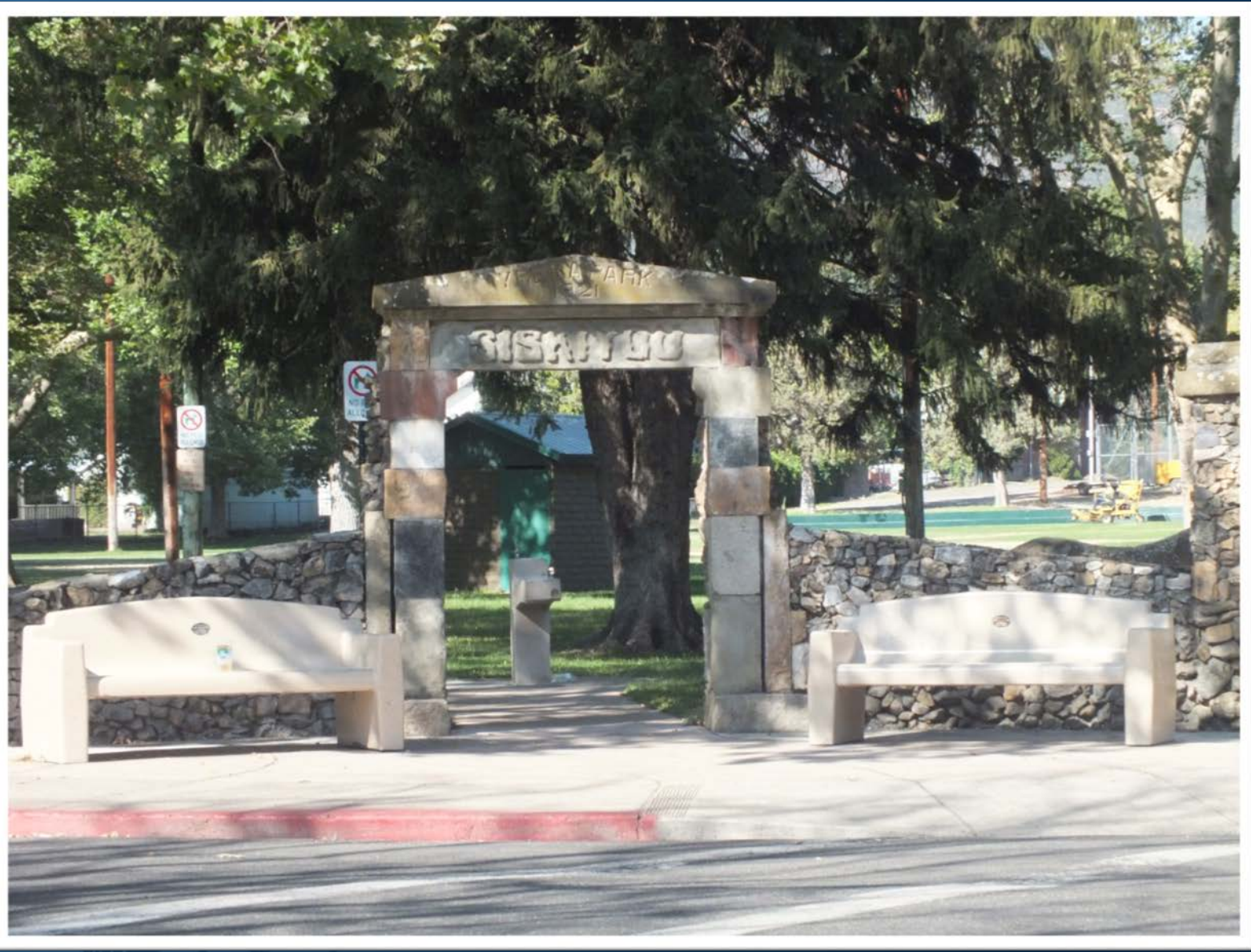


JUDICIAL COUNCIL  
OF CALIFORNIA



JUDICIAL COUNCIL  
OF CALIFORNIA





JUDICIAL COUNCIL  
OF CALIFORNIA





JUDICIAL COUNCIL  
OF CALIFORNIA





JUDICIAL COUNCIL  
OF CALIFORNIA



JUDICIAL COUNCIL  
OF CALIFORNIA



JUDICIAL COUNCIL  
OF CALIFORNIA





JUDICIAL COUNCIL  
OF CALIFORNIA





JUDICIAL COUNCIL  
OF CALIFORNIA





NCIL  
EUREKA



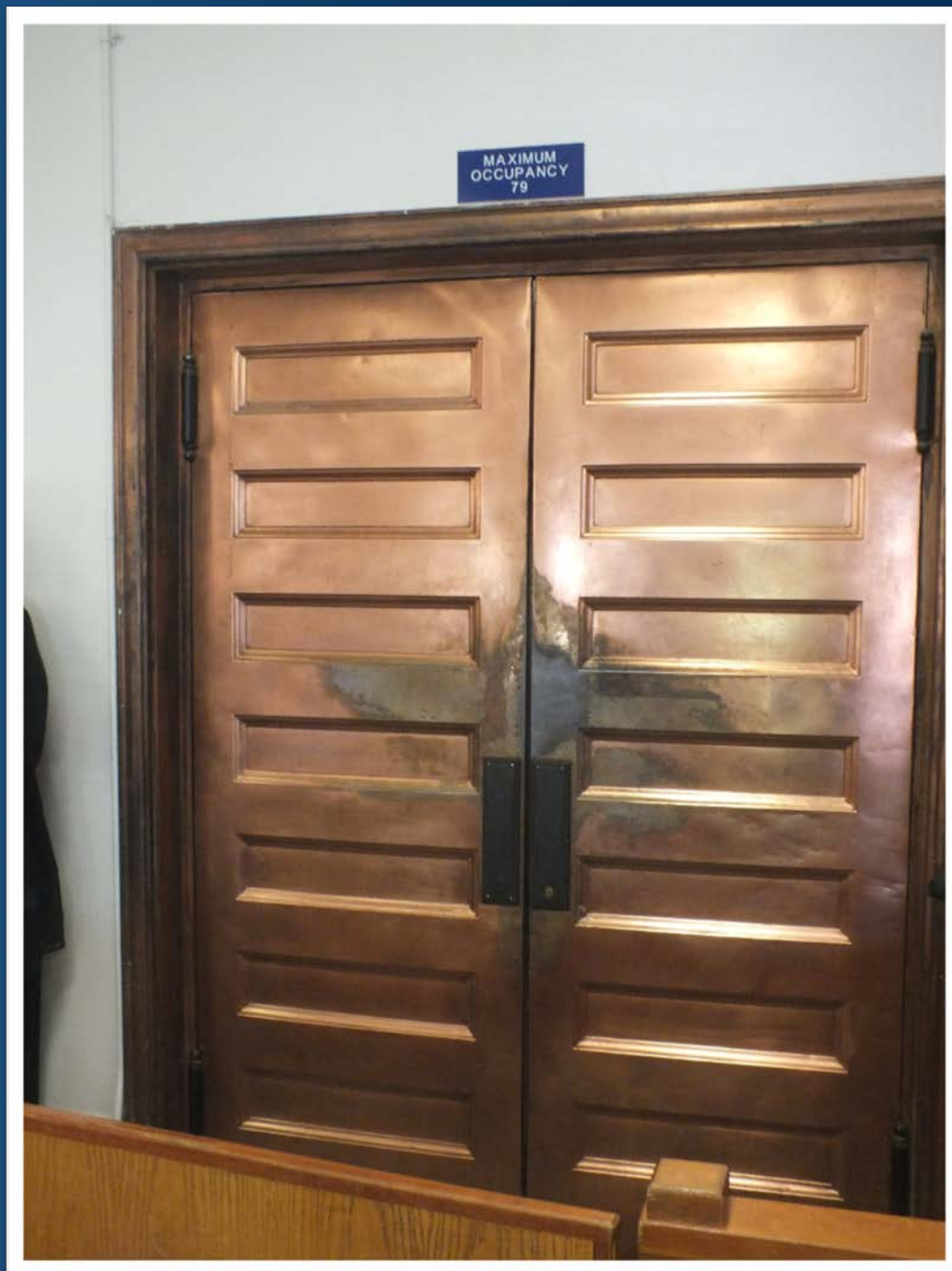
JUDICIAL COUNCIL  
OF CALIFORNIA

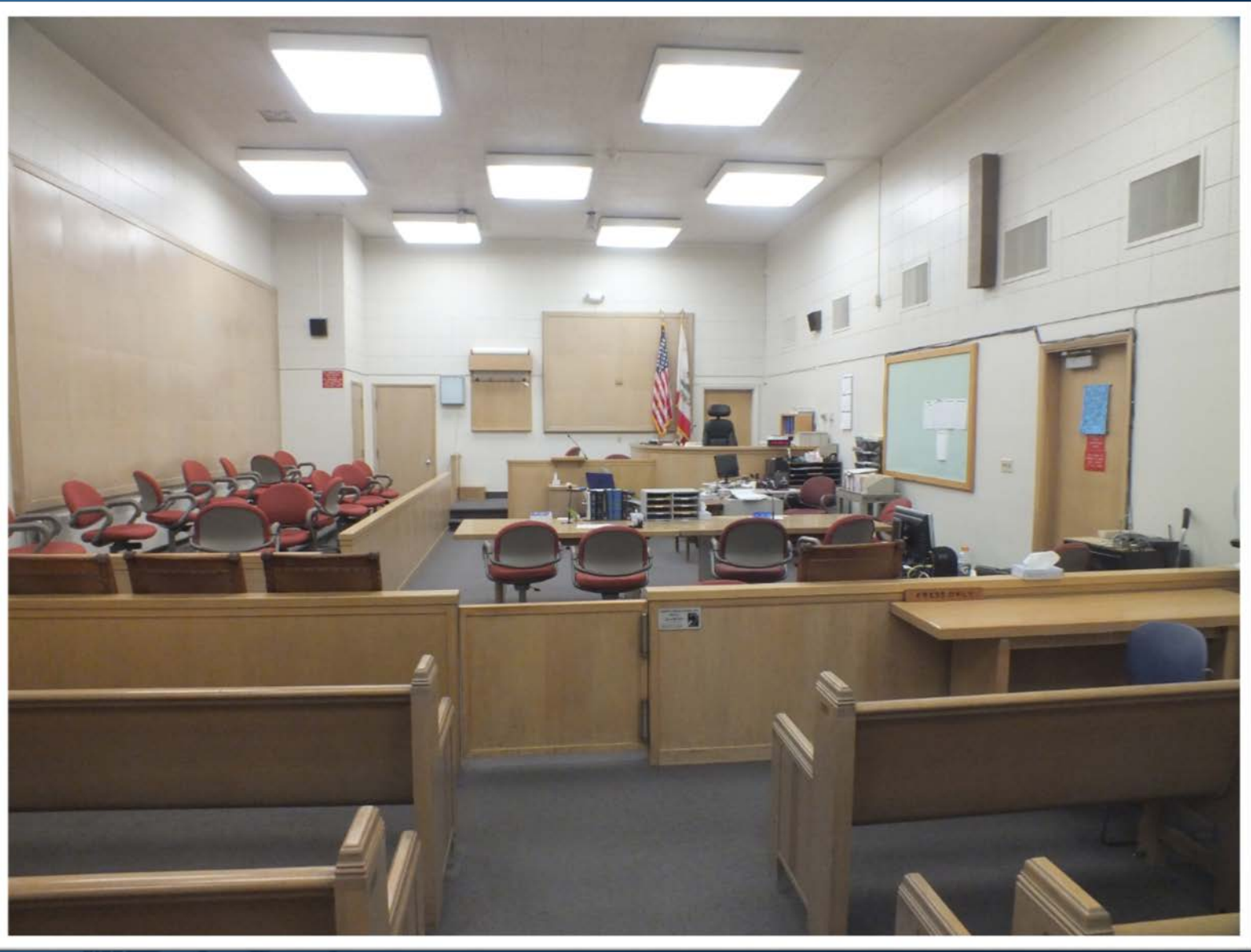


JUDICIAL COUNCIL  
OF CALIFORNIA

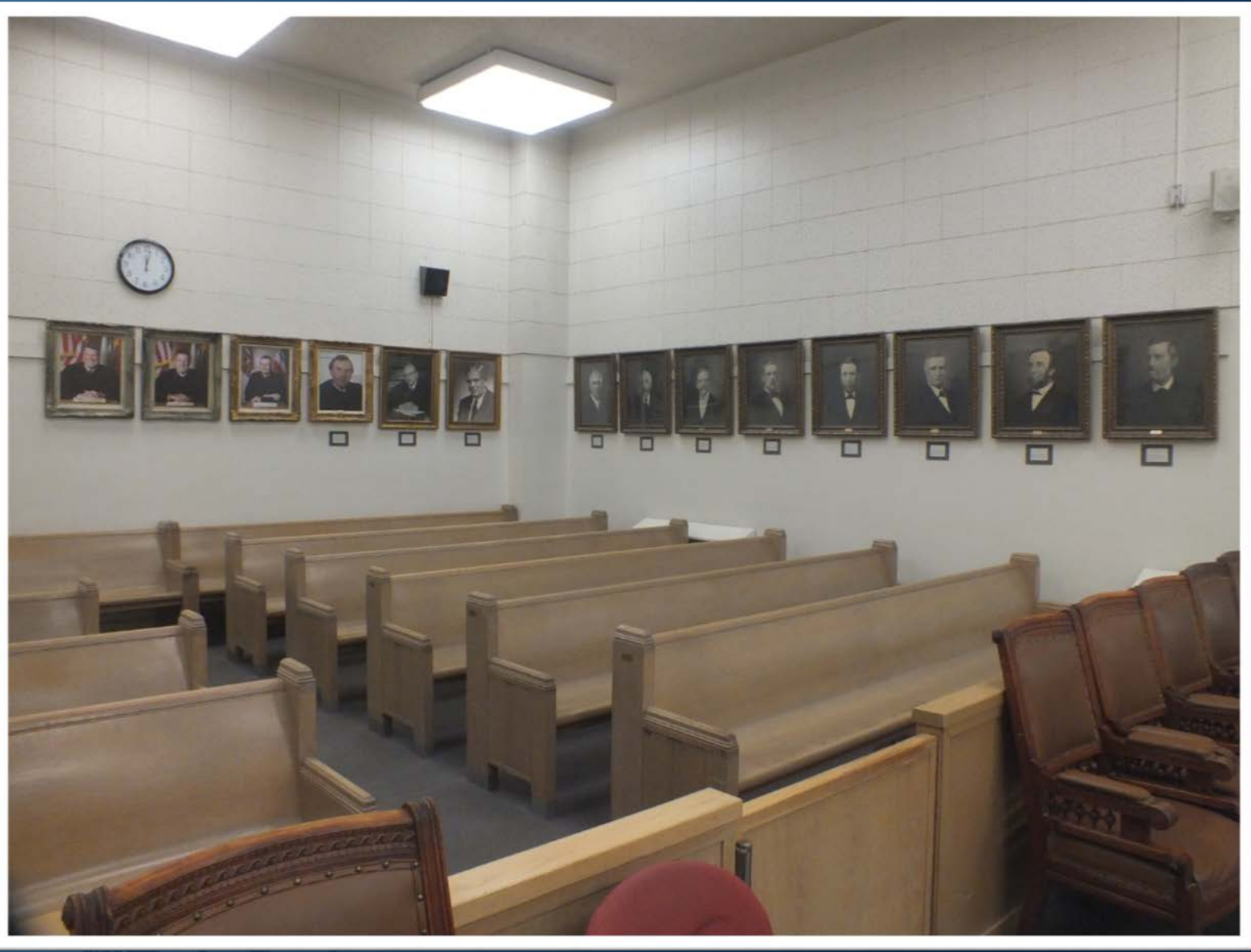


JUDICIAL COUNCIL  
OF CALIFORNIA





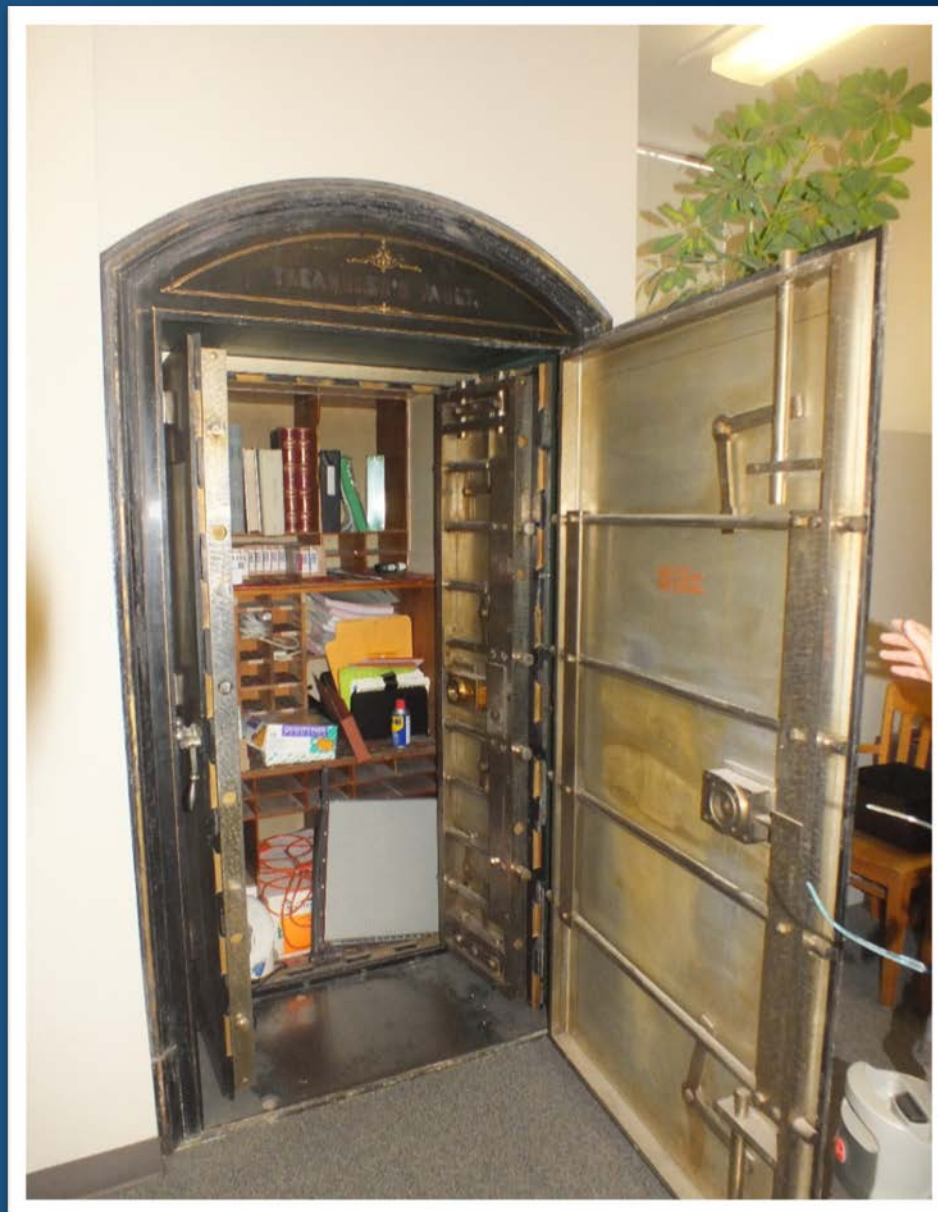
JUDICIAL COUNCIL  
OF CALIFORNIA



JUDICIAL COUNCIL  
OF CALIFORNIA



JUDICIAL COUNCIL  
OF CALIFORNIA







JUDICIAL COUNCIL  
OF CALIFORNIA



JUDICIAL COUNCIL  
OF CALIFORNIA



AREA OF  
RESCUE  
ASSISTANCE

AREA OF REFUGE

THIS ROOM IS DESIGNED  
TO BE FIRE RESISTANT  
AND IS FOR THE  
EXCLUSIVE USE OF  
WHEELCHAIR BOUND  
INDIVIDUALS AS A  
REFUGE IN CASE  
OF A FIRE  
ANY OTHER USE IS  
ILLEGAL

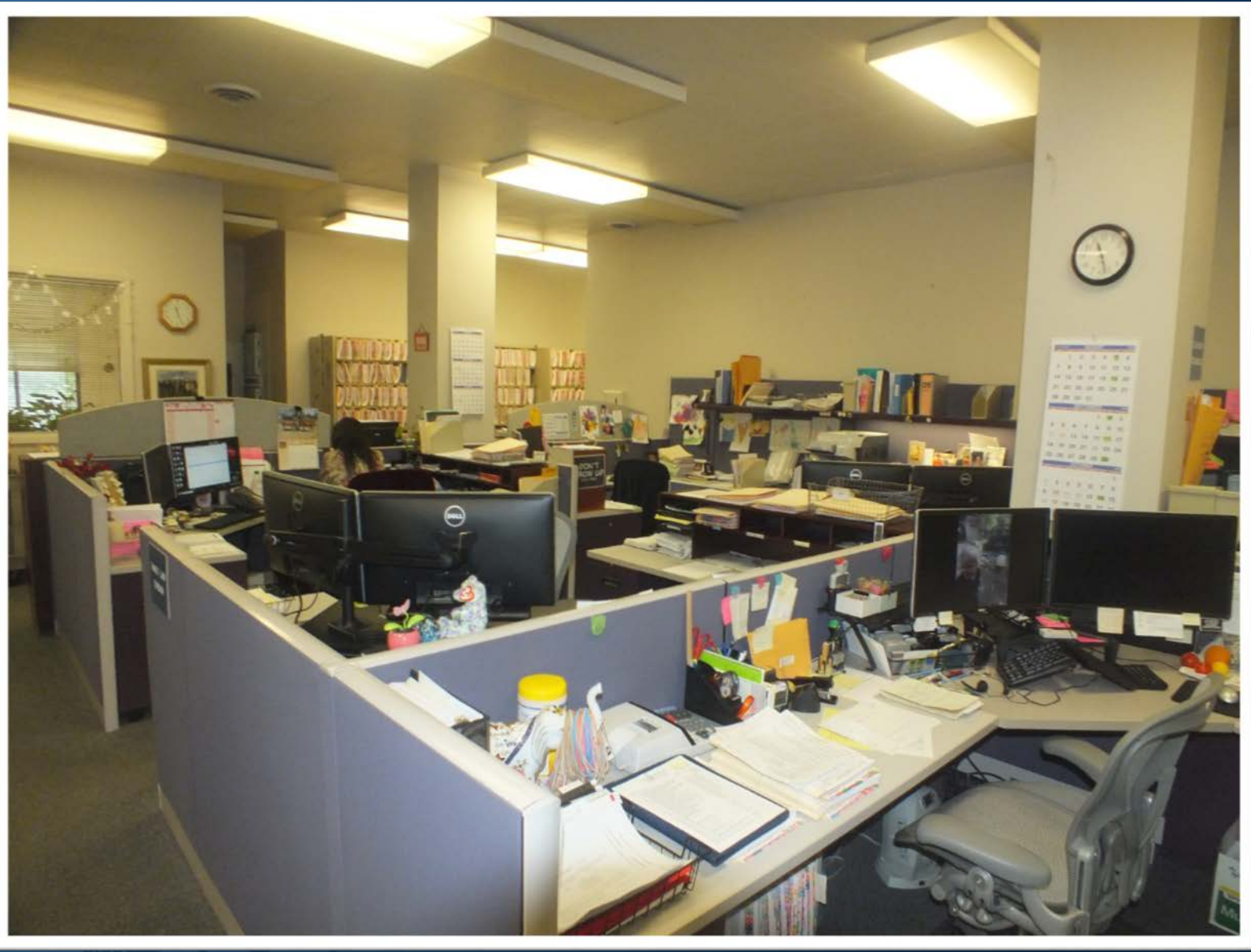


JUDICIAL COUNCIL  
OF CALIFORNIA



JUDICIAL COUNCIL  
OF CALIFORNIA





JUDICIAL COUNCIL  
OF CALIFORNIA

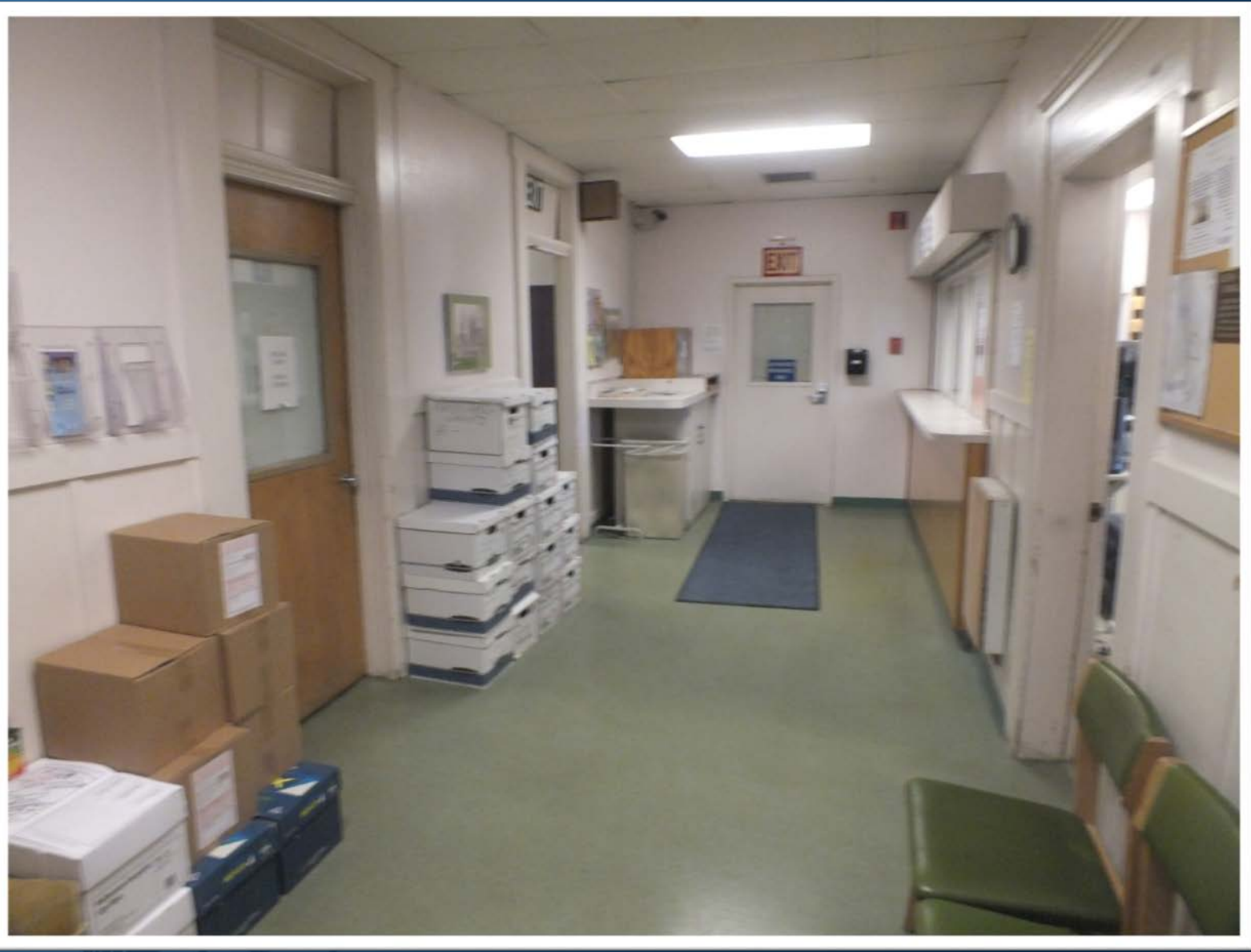


JUDICIAL COUNCIL  
OF CALIFORNIA



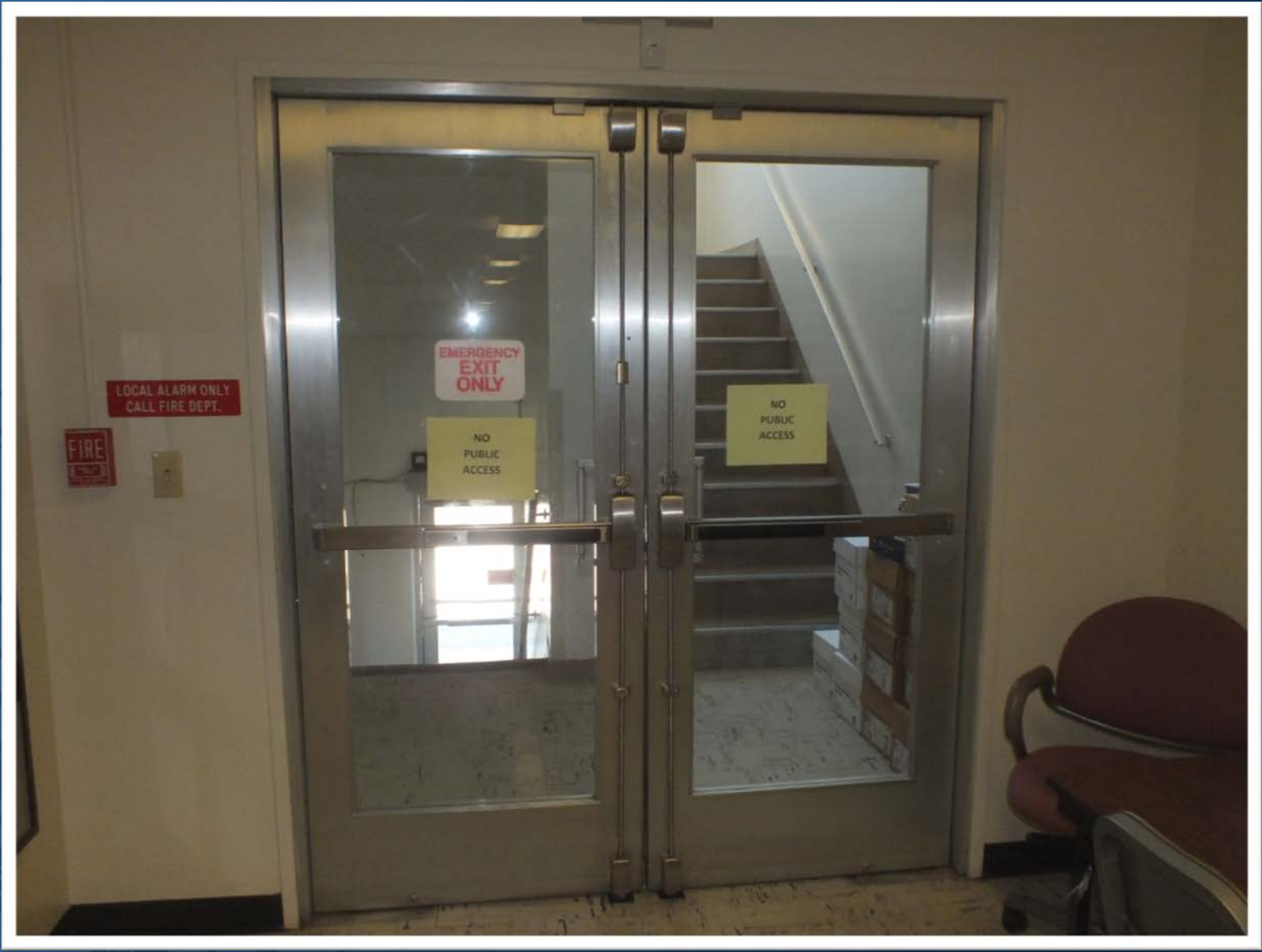


JUDICIAL COUNCIL  
OF CALIFORNIA



JUDICIAL COUNCIL  
OF CALIFORNIA





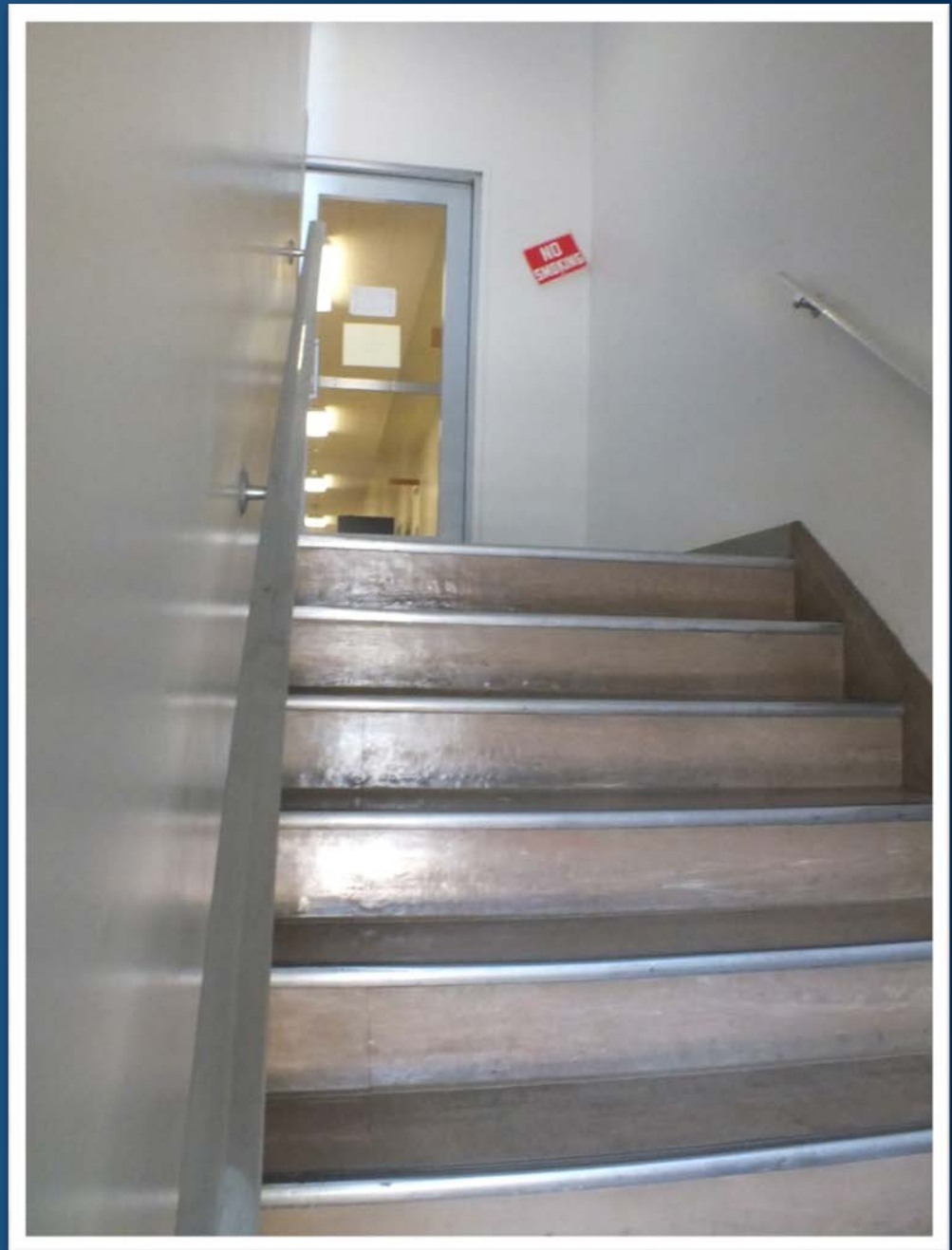
NCIL  
EUREKA



JUDICIAL COUNCIL  
OF CALIFORNIA



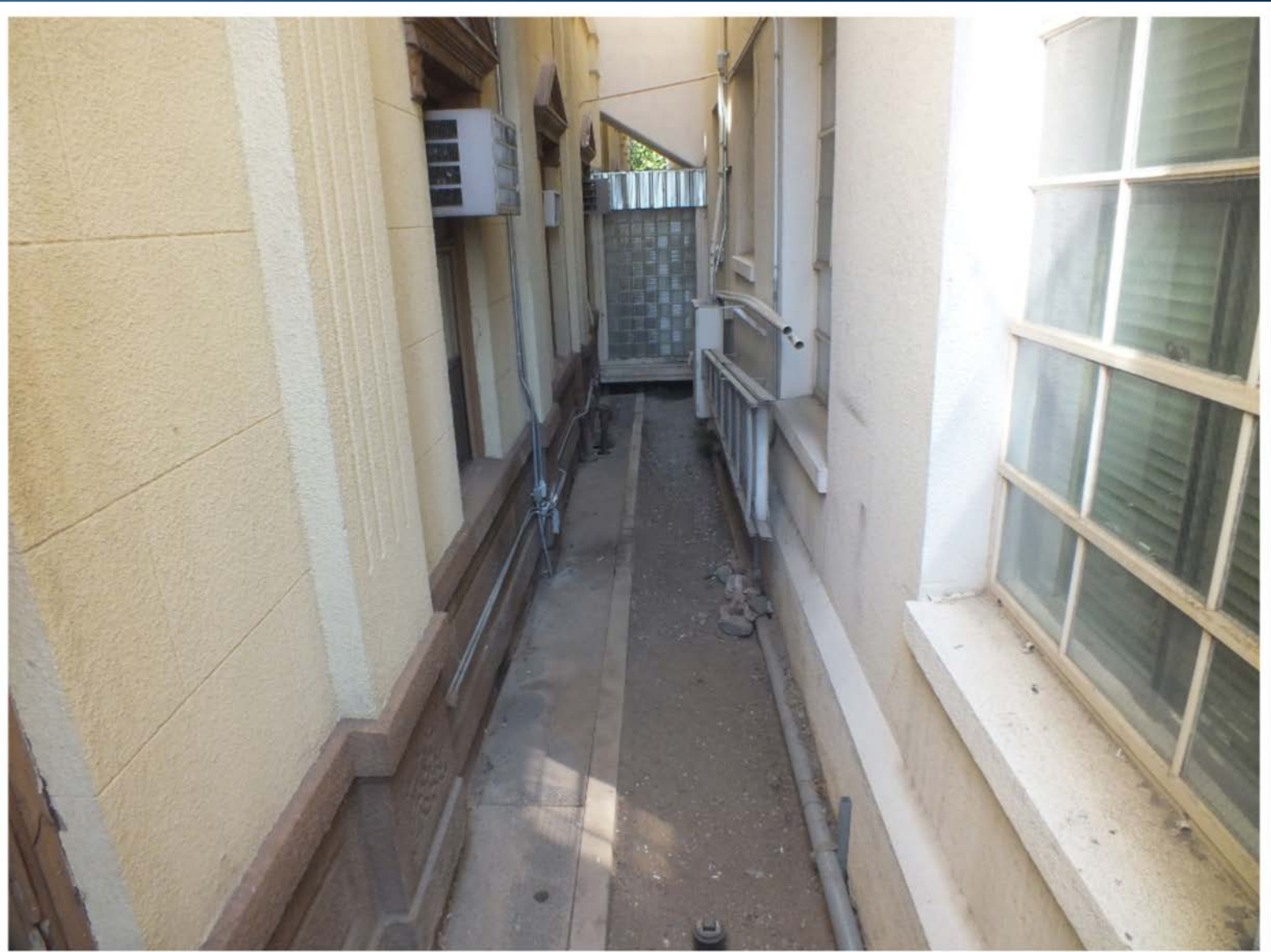
JUDICIAL COUNCIL  
OF CALIFORNIA





JUDICIAL COUNCIL  
OF CALIFORNIA





JUDICIAL COUNCIL  
OF CALIFORNIA



JUDICIAL COUNCIL  
OF CALIFORNIA



JUDICIAL COUNCIL  
OF CALIFORNIA



JUDICIAL COUNCIL  
OF CALIFORNIA